

THE NEBRASKA ARCHITECT

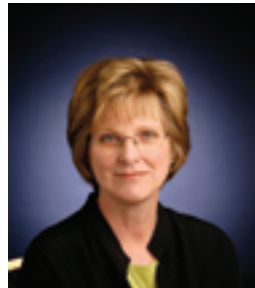


AN AIA PUBLICATION
2006: ISSUE 3

SAVE THE DATE FOR NEXT YEAR'S AIA NEBRASKA LEGISLATIVE FORUM

FEBRUARY 20, 2007

While all elections are important, November 7, 2006, was a watershed election for Nebraska legislative history. Term limits will bring major changes to the membership, leadership and committee assignments of the Unicameral. That much is known. What remains guess work at this point is how the 22 new Senators will affect the tenor, direction, philosophy and effectiveness of the State's law making Body. Relative to the interests of AIA Nebraska, one "near certainty" is the re-introduction of a bill to register Interior Designers. Be sure to be involved in AIA Nebraska's objectives for the 2007 Session. See you in the Rotunda!

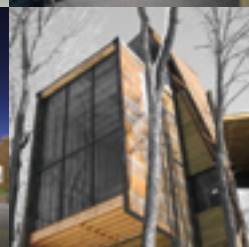
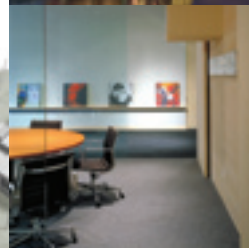
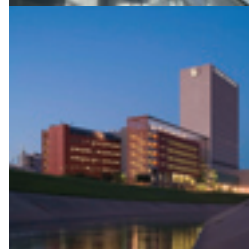
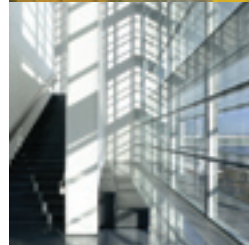
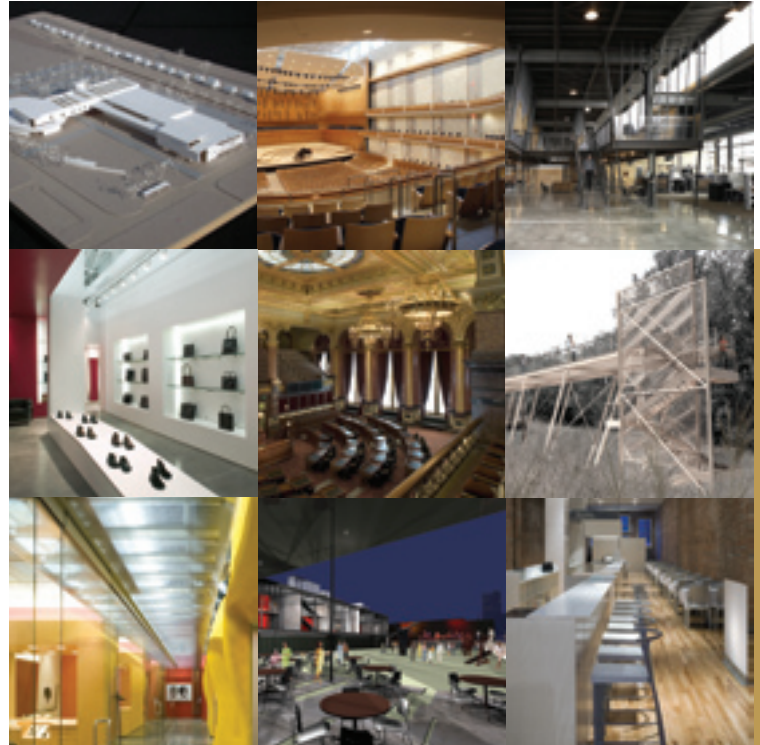


MARY CAMPBELL
CAMPBELL & ASSOCIATES

RECAP

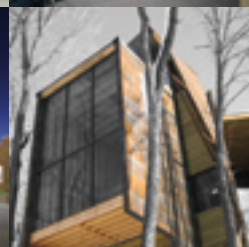
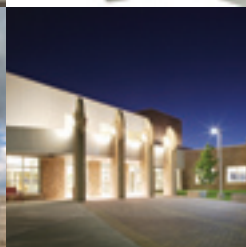
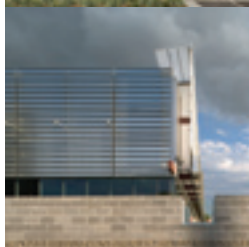
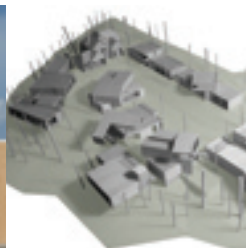
AIA Nebraska tracked 20 legislative bills of interest during the 2006 Session. We successfully accomplished our highest priority, that of stopping LB 1245, the bill to provide for registration and regulation of interior designers. We supported, and saw success, with the passage of funding for deferred maintenance projects for the University of Nebraska and the State College system (LB 605). AIA Nebraska was also on the winning side of restoring the sales tax exemption on construction labor (LB 968). We monitored the passage of LB 924, a bill restricting the use of eminent domain if the taking is primarily for an economic development purpose. By amendment, that bill also provides purchasers of condominiums the right to an independent building inspection at the purchaser's expense. The rest of the bills we followed "died" with the end of the Session.

Mary Campbell and Nick Paden, Campbell & Associates



INSIDE

- 2 **Negotiated Rulemaking**
- 4 **Member News**
- 10 **Regional Convention**
- 12 **2006 AIA Nebraska/ AIA Central States Design Awards**



NEGOTIATED RULEMAKING UPDATE

The below recommendations of the Negotiated Rulemaking Committee are before a drafting Committee comprised of the Nebraska Board of Engineers and Architects. Once approved by the final Board, it will be submitted for the governor's signature. Once the governor signs the proposed rules and regulations, they become law.

OCCUPANCY CLASSIFICATION EXEMPTED MAXIMUM SIZE

| | |
|-------------------------------------|---|
| A Assembly 1,000 sf | I Institutional: |
| B Business: | I-1, Personal Care 3,000 sf |
| Offices 3,000 sf | I-2, Health Care 5,000 sf |
| Ambulatory Care 3,000 sf | I-3 Detention 3,000 sf |
| E Educational 1,000 sf | I-4 Daycare 2,000 sf |
| F Factory 5,000 sf | M Mercantile 3,000 sf |
| H Hazardous: | R Residential: |
| H-1, -2, -3, -4, Flammable 2,000 sf | R-1, -2, -5 4,000 sf |
| H-5, Other Hazard 4,000 sf | R-3, Single family to 4-plex 10,000 sf (*) |
| | S Storage 5,000 sf |
| | U Utility 5,000 sf |

RENOVATIONS AND ONE-LEVEL ADDITIONS

Renovations and one-level additions to an existing building, structure, or work shall require a professional seal when a) The area of renovation or addition exceeds the exempt area set by the matrix, or b) The renovation or addition adversely impacts the mechanical or electrical systems, the structural integrity, the means of egress, or the occupancy classification.

RESIDENTIAL

(*) For single-family through 4-dwelling units, above-ground finished space shall be redefined to mean all enclosed, potentially-habitable space on any level, up to a maximum of 3 levels. Detached sheds or storage buildings and attached or detached garages (up to 3-stalls) are not included in space calculations.

2030 CHALLENGE FOR ALL BUILDINGS

U.S. Conference of Mayors voted to unanimously approve the resolution "Adopting the 2030 Challenge for All Buildings." Prompted by the AIA position statement that calls for the immediate energy reduction of all new and renovated buildings to one-half the national average for that building type, with increased reductions of ten percent every five years so that all buildings designed by the year 2030 will be carbon neutral – meaning that they will use no fossil fuel energy.

The mayors also passed a resolution titled, "Establishing a New Municipal Energy Agenda to Help Address the Nation's Energy and Environmental Challenges and Improve Local Communities." This resolution came as a result of a presentation that was given by the AIA at the U.S. Conference of Mayors Energy & Environment Summit that focused on energy usage. It contains the following goals:

1. Reduce energy usage in municipal buildings
2. Promote green buildings
3. Ensure residential energy assistance
4. Address climate change
5. Encourage diversity in energy generation
6. Improve municipal vehicle fleets
7. Encourage incentives to improve vehicle fuel efficiency
8. Invest in transit and walkable communities
9. Share best energy practices among cities
10. Encourage private sector initiatives.

We're releasing new software. To release you from old frustrations.



We've totally redesigned our AIA Contract Documents software to offer world-class simplicity. We've incorporated familiar toolbars, pull-down menus, and icons, so everything is as streamlined and intuitive. Microsoft® Word and PDF file-saving let you create, share and manage documents with ease. Enhanced storage and retrieval lets you call up project data so it can be automatically incorporated into new documents. Plus, any variances from AIA standard contract language can be displayed in a special report.

To learn more or to download the software, go to www.aia.org or call 1-800-365-2724.

AIA Contract Documents

Microsoft® and Microsoft® Word 2000 are either registered trademarks or trademarks of Microsoft Corporation in the United States and/or other countries. ©2003, The American Institute of Architects

ARCHITECTS ENVISION THE FUTURE OF NEBRASKA'S 'FLATWATER METROPLEX'

We all know architects as people who design everything from houses to skyscrapers, the very things that make up our built environment.

AIA Nebraska played host to this year's Central States Regional Conference held in Omaha, September 14-15, at the Durham Western Heritage museum and the Qwest Center. This gathering applied the know-how of Nebraska architects not to a single building but rather to an entire region surrounding Omaha and Lincoln known as the "Flatwater Metroplex."

The region is currently home to more than one million people, a population that is expected to double in less than fifty years based on U.S. Census projections. This rapid growth is putting unprecedented pressure on rural and urban communities, the environment, and on natural resources such as water and agricultural lands.

AIA Nebraska architects were paired with stakeholders gathered from the Metroplex region in a design charrette, "Envisioning Regional Design: The Flatwater Metroplex," that challenged them to explore possible outcomes facing six representative environments in the region and translate those outcomes into drawings and computer-aided designs.

A primary goal of the Sept. 13-14 charrette, conducted in the vast Restoration Hanger at the Strategic Air & Space Museum, was to help the region's citizens and decision-makers examine future quality of life choices by comparing two scenarios of for growth: the consequences of unplanned growth versus outcomes from growth guided by sustainable principles. The charrette was co-sponsored by AIA Nebraska, Omaha's Joslyn Castle Institute for Sustainable Communities (JCI), and Nebraska Innovation Zone Commission (NIZC).

The six charrette environments included Omaha's Drake Court District, the I-80 Corridor, Downtown Lincoln, the City of Ashland, a hypothetical conservation community near Bennington, and a Fremont shopping mall. These environments were selected to represent a broad range of real-life conditions, and their

study also considered the transferability of ideas and visions to similar environments and communities in the Metroplex.

Noted urban planner George M. Crandall, who has been responsible for more than

50 major urban and community design projects across the country including the Downtown Lincoln Master Plan, helped facilitate and interpret the results of the charrette along with W. Cecil Steward, president of JCI and AIA150 Nebraska Champion.

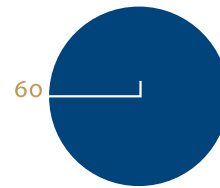
The impetus for the charrette was provided by the ongoing regional planning work of JCI and by the national AIA's "Blueprint for America," a series of local forums and charrettes conducted across the nation to mark AIA's 150th anniversary. The commonalities of these "visions," including visions derived from the Nebraska charrette, will be refined by AIA to inspire a national vision for healthy, safe, and sustainable American communities and outline the necessary steps

required to enhance the built environment.

W. Cecil Steward said, "Nebraska is very fortunate to have the levels of talent and enthusiasm for regional design and planning among the community of architects in this state." The charrettes drew more than 140 architects, stakeholders,

civic leaders and citizens from the region for the day-and-one-half event. "The participation was outstanding," Steward said, "and, the results will be pivotal to a new level of public understanding about the region becoming a more livable and sustainable environment." "Furthermore, he said, the JCI is very pleased and fortunate to have the partnership of AIA Nebraska in this project."

According to the national AIA, the resulting mosaic will be presented to the nation "as a gift for the future and as a testament to the value of design and the AIA architect."



ENVISIONING REGIONAL DESIGN



PANDEMIC PLANNING

REPRINTED BY PERMISSION – NEBRASKA CHAMBER OF COMMERCE & INDUSTRY
THE EXECUTIVE OCTOBER/NOVEMBER 2006

Most experts agree that there is a growing and significant threat of a global pandemic, but that there is no way to predict either exactly when it might occur or the severity of the impact. As with any of the risks that we face as a country, including natural disasters and the ongoing possibility of another terrorist attack, it is imperative that all segments of society be prepared for such a threat. The U.S. Chamber of Commerce is therefore encouraging preparedness for an influenza pandemic within the business community.

In addition to the threat that a pandemic could pose to human health worldwide, few industries will be insulated from the economic effects resulting from absenteeism in the workplace or from the downstream effects stemming from supply-chain and travel disruption.

It is important for business owners and leaders to be knowledgeable about the risks associated with the threat of an influenza pandemic and, in turn, to be adequately prepared for the possibility of a pandemic that would have significant social and economic loss. Each winter, the flu kills approximately 36,000-40,000 Americans, hospitalizes more than 200,000, and costs the U.S. economy over \$10 billion in lost productivity and direct medical expenses. As staggering as these figures are, health experts are now warning about a far more lethal kind of flu—a pandemic flu that could kill over a half million in the U.S., hospitalize millions more, and cost our economy an estimate \$160-\$675 billion.

- The U.S. Government website for information on pandemic flu and avian influenza: <http://www.pandemicflu.gov>
- Educational material and up to date news for employers and employees: www.apfluwatch.com

SCHOLARSHIPS PRESENTED

AIA Nebraska was a recipient of an AIA National grant, enabling the scholarship program to increase by 100%.

The following representatives of AIA NE judged this year's scholarship process: Bruce Carpenter, AIA, HDR; Loren Lamprecht, AIA, Altus Architectural Studios; Rebecca Koller, AIA, University of Nebraska; Mark Hoistad, AIA, UNL/College of Architecture.

Recipients and scholarship presentors: Aaron Trvdy, W. Cecil Steward Scholarship; Sara Kay, executive director; Dustin Wekesser, Cultural Exploration Scholarship; Bruce Carpenter, President-Elect; Erin Wencel, Architectural Excellence Scholarship; Katie Schmidt, Cultural Diversity/ Gender Equity Scholarship



FIZBO AND THE 9,999 SQUARE FOOT HOUSE

NICOLE LUDACKA,
ASSOCIATE DIRECTOR – AIA NEBRASKA

I heard a news story on the Today show, that brought the architecture profession into perspective for other professionals. Its called FSBO, pronounced "Fizbo." The, For Sale by Owner, manifesto that has Realtors screaming. More and more people today feel they can do the same and sometimes better job of selling their home than realtors. Ring a bell? Since starting in the professional world how many 'would be architects' have you met? The "When I was little I wanted to be an architect..." quote. If that comes out at the start of the job, make sure you get your contract signed. It can usually mean two things: your client is going to design their building for you or they don't think they need to pay you for your services. Why should they, they were going to be an architect.



For the last 2 years a group of professionals (including architects, engineers, contractors, homebuilders, codes officials, realtors and city leaders) in Nebraska have been meeting for what is called Negotiated Rulemaking. For myself, I would have to say pretty boring stuff. However these are things that we as architects should be taking note of because it affects our profession directly. Codes officials and

home builders are stirring things up on many issues concerning construction methods, building use and the IBC. They have been charged with clarifying and recommending changes of the laws where necessary. The Committee has to have a unanimous vote to recommend a change to the Nebraska Board of Engineers and Architects who in the end have the final decision. Issues include changing the residential requirement for an architect from 5,000sf to 10,000sf, clarification on assembly square footage and occupancy and issues concerning renovations and occupancy change. One discussion item listed in the special issues is stated as "Rural areas may or may not have adopted a building code, have a building official and have cost effective access to architects or engineers. Thus the impact of the rules on builders would be different and needed to be taken into account when writing the rules." This was followed by a statement obviously from one of our professional representatives, "When rules are written, they should apply equally to rural and urban areas." Good thing someone is paying attention.

So let me get this straight, since someone chooses to live in a rural area they should have the ability to build what ever they want? 10,000 square feet? If some one can build a behemoth house in the middle of the sand hills, I think they can afford an architect. How much do they think we get paid? Realtors; welcome to our world...and you are not even dealing with people's health, safety and welfare. Just like realtors are trying to combat Fizbo with their National ad campaigns, we as architects need to do a little campaigning of our own, starting with the 9,999 square foot house.

DESIGN IS THE HEART OF OUR INSTITUTE

ED VIDLAK, AIA NEBRASKA PRESIDENT

A comment made recently from a close colleague struck me as funny. She stated she has enjoyed her time with the AIA locally, but felt that the state and national levels focused too much on politics and legislative issues and not enough on design. Our conversation was in passing, so at the time I just let the comment slide. The more I thought about it though, the more I wished I had responded.

When you stop and think about it, there really isn't anything the Institute advocates that doesn't somehow, some way address how architects practice. We are all design professionals. And whether we are sole proprietors or teammates within a small, medium, or large firm, we are all connected in this profession by the practice of design. The Institute is the one body working consistently to promote an understanding and appreciation for design and our profession.

For example, just in the past few months in Nebraska we have witnessed the following work by some of our active AIA members:

- **Amendment 1.** This historic preservation tax incentive, passed last legislative session will benefit all communities across the state, providing the catalyst for economic development while preserving Nebraska's diverse and rich architectural heritage.
- **Negotiated Rulemaking.** Architects were asked to assist with the review and update of the state's statutes for when, where, and how a licensed architect is required in Nebraska. AIA members were there to ensure that the public's health, safety, and welfare were the foremost concerns during these committee meetings. This state appointed committee also included realtors, builders, and local building officials.
- **Interior Design Legislation.** Most architects support the interior design lobby to develop a distinction for recognizing

qualified interior design professionals. However most also feel that the proposed interior design bill presented this past legislative session was too close to practice legislation, thereby diluting the architect's primary responsibility of protecting public health, safety, and welfare.



We owe a debt of gratitude to those members who have unselfishly worked on these issues on behalf of the profession. This includes George Haecker and Michael Alley for their work on Amendment 1; John Sinclair, Jack Wilkins, and Melinda Pearson for their work on the Negotiated Rules Committee; and Lowell Berg and Ron Hughbanks for their work on the Interior Design Bill. All of these members share a keen interest in design, and not necessarily politics. But without their active involvement in key issues such as these, our ability - all of us - to practice design as we are accustomed would be greatly compromised.

As we gathered at the Central States Convention, we celebrated our common ground as AIA members - design. We celebrated how design enlightens, protects, and improves the quality of life we experience in our built environs every day. We celebrated the award winners, as well as the 240 award submittals that represent the hard work and passion for design that we all share. We were also invited to celebrate the quiet, constant, behind-the-scenes efforts of so many of our good members, all dedicated to ensuring a social, political, and cultural environment that understands and supports the practice and benefits of good design.

MID-STATE ENGINEERING & TESTING, INC.

- Geotechnical Engineering
- Environmental Assessments
- Construction Quality Control
- Construction Materials Testing
- Pavement Evaluations

279 Road 'D'
Columbus, NE, 68601
402-562-7824
midstate@plattevalley.net

11 East 11th Street
Kearney, NE, 68847
308-237-0187
midstateeng@nebi.com

Thank You AIA!



Microsoft
CERTIFIED
Partner

ISV/Software Solutions



www.standardshare.com

1.800.642.8062

402.592.1292

GREETINGS

JAY ANDERSON, PRESIDENT – AIAS NEBRASKA

This year has been a very exciting and busy year for the AIAS Chapter here at the University of Nebraska Lincoln. Since the spring semester of 2006, our members have been involved in numerous activities. During the summer, our members represented the Nebraska Chapter in Los Angeles at the AIA National Convention, Grassroots Leadership Conference in Washington D.C, volunteered with the Bright Lights Summer Architecture Camp as well as performing construction on the Bright Lights Bike Shelter.

In September, we had our membership drive in coordination with the Dean's All-College Welcome & Ice cream Social. We had a very successful drive and now have nearly 130 members. A Mentorship Barbeque was held for our mentorship program, which had approximately 40 members attending. We also had a large part in the AIA Central States Convention and Design Charrette where AIAS members took the lead in actually designing solutions, which could soon be implemented in the Lincoln/Omaha area.

We are currently working on Freedom by Design, which is now a nationally recognized program with the Nebraska Chapter being one of the original pilot programs three years ago. We are also volunteering with Habitat for Humanity, and the Nebraska Grocers Associating Red Card/Green Card program, which aides in reducing the sale of alcohol to minors. In addition to those activities, we are

also helping reduce construction costs at the college by assisting in demolition for the new laser cutter facility. Our members are also in the process developing a new website, located at <http://www.aiasne.org>, which will serve as a terrific information vehicle for our Chapter.

Soon several of our members will be attending the AIAS Midwest Quad Conference in Detroit, MI and in December, we will send our members to Boston, MA to attend FORUM, the national conference for AIAS chapters across the nation. Finally, at FORUM, the AIAS-Nebraska President Jay Anderson will be running for the national office of Midwest Quad Director.

We have had a fantastic year thus far and will continue do so as our members will continue to lead not only at our college, but also our community.

Thank you,



Versatility and durability.

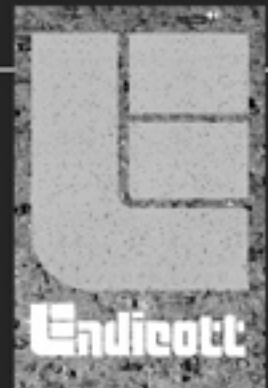


Creativity demands a unique and rich palette. The authentic Ironspot colors and elegant textures of Endicott's face brick, residential brick, thin brick, pool coping, tile and pavers fuel the imagination...and are nationally recognized for their unmatched beauty, versatility and durability.

**Face Brick • Thin Brick • Pavers
Tile • Glazed Ware • Brick Murals
Special Shapes**

Endicott Clay Products Co. • Endicott Tile LLC

Dick Geier 402/420-7141 • Larry Joe 402/729-5600
Fax: 402/729-5804 • Email: endicott@endicott.com • www.endicott.com



THE FOLLOWING WERE ELECTED AT THE AIA NEBRASKA ANNUAL MEMBERSHIP MEETING TO SERVE ON THE 2007 BOARD OF DIRECTORS:

| | |
|---------------------|---|
| President Elect: | Larry Smith, AIA, Avant Architects, Inc. |
| Secretary: | W. Larry Jacobsen, AIA, The Schemmer Associates, Inc. |
| Treasurer: | Kristi Nohavec, AIA, The Clark Enersen Partners, Inc. |
| Directors: | Tammy Eagle Bull, AIA, Encompass Architects, P.C. Robert Ripley, AIA, Capitol Commission |
| Associate Director: | Kurt Cisar, Associate AIA, Holland Basham Architects |

2007 POSITIONS NON-ELECTED

| | |
|-----------------------------|--|
| President: | Bruce Carpenter, AIA, HDR |
| Lincoln President: | John Badami, AIA John Badami Architects |
| Omaha President: | John Dineen, AIA, HDR |
| Western Nebraska President: | Kenneth Frederick, AIA, Master Builder Associates |
| Past President: | Ed Vidlak, AIA, Leo A Daly |
| Ex Officio: | R. Wayne Drummond, FAIA, UNL, College of Architecture Mark Hoistad, AIA, UNL, College of Architecture Jay Anderson, AIAS President Sara Kay, Executive Director |

WELCOME TWO NEWLY ELECTED MEMBERS:

DIRECTOR, ROBERT RIPLEY, AIA, CAPITOL COMMISSION

A Nebraska native and 1972 graduate of the University of Nebraska College of Architecture, Robert Ripley is a licensed architect previously in private practice until accepting his current position with the State of Nebraska in 1983. As Capitol Administrator for the Nebraska Capitol Commission, he is involved in the on-going preservation, restoration and enhancement of the Nebraska Capitol, its site and environs planning. From 1997 to 2000, he also served as preservation consultant and project coordinator for the interior restoration and renovation of the Washington Monument in Washington D.C. for corporate sponsor TARGET Stores with Michael Graves & Associates and the National Park Service. Mr. Ripley also serves as chair of city Historic Preservation Commission, is a member and past chair of the Lincoln Parks Advisory Board and has been state liaison to the joint city-state Nebraska Capitol Environs Commission since its creation in 1987.

ASSOCIATE DIRECTOR, KURT CISAR, ASSOCIATE AIA, HOLLAND BASHAM ARCHITECTS

Kurt Cisar, Associate AIA, graduated from the University of Nebraska at Lincoln with his Master's degree in Architecture in 2005, where he was awarded the Cunningham Medal for his work on his terminal project. Kurt currently works in Omaha for Holland Basham Architects and has been an active participant with both AIA and Young Architects Forum.



NEW AFFILIATE MEMBERS

Henry Green, Nebraska Brick & Supply
Joe Kearns, Twin City Concrete Products
Jereme Montgomery, NE Concrete and Aggregates Assoc.
Ravi Maniktala, ME Group, Inc.
Michelle Erickson, Phillips Manufacturing Company
Bill Merritt, Kate-Lo Tile & Stone
Dean Jessick, SGH, Inc.
Casey Scheidt, Concrete Materials
Barry Hale, Clairmont Construction

NEW AIA MEMBERS

Jonathan A. Fliege, AIA, Leo A Daly
Ronald G. Hackett, AIA, Davis Design, Inc.
Angie Christine Knutson-Smith, AIA, Altus Architectural Studios

NEW ASSOCIATE MEMBERS

James D. Ayres, Associate AIA, Davis Design
Rajeev M. Bajpeyi, Associate AIA, Architecture Etcetera, LLC
Taylor L. Cupp, Associate AIA, Holland Basham Architects
Chris T. Ford, Associate AIA, College of Architecture
Dan P. Johnson, Jr., Associate AIA, HDR, Inc.
Sandra Lamm, Associate AIA, Architecture Etcetera, LLC
Megan Lutz, Associate AIA, DLR Group, Inc.
Sara Patzel, Associate AIA, Studio 951, Ltd.
Dominic Sawtell, Associate AIA, Studio 951 Ltd.
Jamie D. Winter, Associate AIA, Carlson West Povondra Architects

NEWLY LICENSED MEMBERS

Paul Ritchie, AIA, Cameron General Contractors
Jackson Martis, AIA, Frasier & Stokes, PC

IN MEMORY

John A. Benson, AIA
Dick Coyle, AIA
Donald M. Mullins, AIA

McGraw Hill CONSTRUCTION Architectural Record

JULY 2006 – INTEGRATED FIRMS DOMINATE ARCHITECTURE PRACTICE RANKING

Two of Nebraska's architectural firms were listed as the biggest of the big firms across the county. The 2006 list ranks firms on the basis of revenue derived from architectural services only (#7. HDR, Omaha / Architecture Revenue \$139.3 and #12. Leo A Daly, Omaha / Architecture Revenue \$106.5).

- Tom Allisma, Associate AIA, was named as a Midlands Business Journal 40 under 40 recipient.
- Berggren Architects names Dennis Klawonn, AIA, head of its new Office Design Studio.
- Cannon Moss Brygger & Associates has merged with Architects Collaborative, with offices in Spencer and Ames, IA.
- Cedric Chone, Associate AIA, has become a full-time member of Bahr Vermeer Haecker Architects, Omaha.
- Steve Clymer, AIA, has been promoted to associate principal, Bahr Vermeer Haecker Architects, Lincoln.
- Wayne Drummond, FAIA, was elected President, NAAB, National Architectural Accrediting Board.
- Ronald G. Hackett has joined Davis Design as a senior associate and new director of the firm's Omaha office.
- Michael Hamilton, AIA, has joined Leo A Daly as a senior architect.
- George Killian, AIA, Facilities Management and Planning, University of Nebraska at Omaha, was appointed to the Omaha Plumbing Board.
- Randall Milbrath, AIA, and Paul Syverson, AIA have joined RDG Planning and Design.
- Rick Weidner, AIA, has joined JEO Consulting Group as a senior project architect.
- Leo A Daly announces the following promotions of vice presidents, John W. Andrews, AIA and Ross J. Raneri, AIA.
- HDR announces the following promotions of Craig Ellis, AIA, senior vice president, Chris Barnwell, AIA, vice president, Josh Rownd, AIA, vice president.

Why Specify Precast Concrete Products in the Upper Midwest? 12 Great Reasons!

| | | | | | |
|--|---|---|--|---|---|
|  Clear Lake, IA (641) 357-5217 |  Grand Forks, ND (701) 772-6687 |  Lincoln, NE (402) 434-1800 |  Omaha, NE (402) 291-0733 |  Maple Grove, MN (763) 425-2060 |  Omaha, NE (402) 895-3848 |
|  Savage, MN (952) 890-4444 |  Sioux Falls, SD (605) 338-1180 |  Maple Grove, MN (763) 425-5555 |  Lino Lakes, MN (800) 338-6546 |  Newton, KS (316) 283-2277 |  Wells, MN (800) 658-7049 |

All members of the Midwest Precast Association are certified by the Precast/Prestressed Concrete Institute. This certification ensures only the highest levels of quality. For more information on PCI certification levels and other precast product information visit our website or call one of our producer members.



www.midwestprecast.com



regional convention

EXHIBITORS

ASI-Modulex

1219 Zimmerman Dr. South
Grinnell, IA 50112
641.236.6616
gala.dejong@asimodulx.com

Bockmann, Inc.

1420 Centerpark Rd
Lincoln, NE 68512
402.423.6631
jns@bockmanninc.com

Buildex Inc.

PO Box 77
Ottawa, KS 66067
785.242.2177
brockers@buildex.com

Carroll Seating Company, Inc.

905 Broadway #200
Kansas City, MO 64105
816.471.2929
mcarroll@carrollseating.com

Central Fiber Corp.

4814 Fiber Lane
Wellsville, KS 66092
785.88.4600
craiga@sunflower.com

Chicago Lumber Company

1324 Pierce Street
Omaha, NE 68108
402.342.0840
patduesman@chicagolumbercompany.com

Clairmont Construction

8802 S 135th Street, #100
Omaha, NE 68138
402.861.4490
mscaturro@amienvronmental.com

Concrete Materials Company

101 Industrial Drive
Harrisburg, SD 57032
605.336.5788
cscheidt@concretematerialscom-pany.com

Coreslab Structures (Omaha) Inc.

802 Allied Road
LaPlatte, NE 68123
402.291.0733
tculp@coreslab.com

Dakota Wall Systems, Inc.

8810 S 120th Street
LaVista, NE 68128
402.891.6520
samy@dakotawall.com

Dean Lally L.P.

420 Woodruff Road
Joliet, IL 60432
815.726.2007
fonda@deanlally.com

DK & B Construction Specialties

12231 Robert Road
LaVista, NE 68128
402.731.5604
kristen@dkandb.com

E & A Consulting Group

330 N 117th Street
Omaha, NE 68154
402.895.4700
lpaulsen@eacg.com

Emanuel Construction Specialties

416 S 14th Street
Omaha, NE 68102
402.342.2920
dje@emanuelcs.com

Enterprise Precast Concrete

13800 Giles Road
Omaha, NE 68138
402.895.3848
colmb@enterpriseconcrete.com

Geotechnical Services, Inc.

7050 S 110th Street
Omaha, NE 68128
402.339.6104
jhahm@gsinetwork.com

Hirshfield's Inc.

725 Second Avenue North
Minneapolis, MN 55405
515.988.3207
kschleicher@hirshfields.com

Ingersoll Rand Security Technologies

15055 W 116th Street
Olathe, KS 66062
913.562.1353
greg_liszewski@irco.com

Jasper Stone Company

300 S Phillips Ave, Suite 200
Sioux Falls, SD 57104
605.334.5000 x103
jconnichsen@lgeverist.com

Kate-Lo Tile & Stone

701 Berkshire Lane North
Plymouth, MN 55441
402.709.6684
billm@katelotile.com

Kwalu

7810 Garnett
Lenexa, KS 66214
913.268.7244
hlhendks@aol.com

Lifestyle Drapery

4735 NW Radial Hwy
Omaha, NE 68104
402.556.1950
blindman@lifestyle.com

Lone Star Stone, Inc.

P.O. Box 2125
Whitney, TX 76692
254.694.6613
brianhosterman@lonestystone.com

Mapes Industries, Inc.

2929 Cornhusker Hwy
Lincoln, NE 68504
888.273.1132
mmundorff@mapes.com

ME Group, Inc.

2820 N 48th Street
Lincoln, NE 68504
402.464.3833
debbie.swanson@megroup.com

Metal Designs Systems, Inc.

930 27th Ave SW, Suite D
Cedar Rapids, IA 52404
319.362.7454
mdietsch@crmdsi.com

Mid-Continental Restoration Company, Inc.

PO Box 429
Fort Scott, KS 66701
620.223.3700
ninabosley@midcontinental.com

Midland Garage Door Mfg. Co.

13661 Giles Road
Omaha, NE 68138
402.895.6575

Mid-West CAD, Inc.

620 SE 291 Hwy, Suite 106
Lee's Summit, MO 64063
816.525.5767
craig.partin@mwcad.com

Molin Concrete Products

415 Lilac Street
Lino Lakes, MN 55014
800.336.6546
jimm@molin.com

NCARB

1801 K Street NW
Washington, DC 20006
202.783.6500
customerservice@ncarb.org

NEBCO

14306 Giles Road
Omaha, NE 68138
402.896.0900
lisa@watkinsconcreteblock.com

Nebraska Brick & Supply

13801 Industrial Road
Omaha, NE 68137
402.408.5555
hgreen@siouxcitybrick.com

Nebraska Concrete & Aggregates Association

6000 Cornhusker Hwy
Lincoln, NE 68507
402.325.8414
jereme@nebrconccagg.com

Nebraska Masonry Institute

11414 West Center Rd.
Omaha, NE 68144
402/330-5260
nemasyinst@aol.com

OHARCO

8109 F Street
Omaha, NE 68127
402.342.4489
lvancleave@oharco.com

Pella Windows

9845 South 142nd Street
Omaha, NE 68138
402.672.5700
slanik@pellaomaha.com

Raco Interior Products, Inc.

2000 Silber Rd.
Houston, TX 77055
713.682.6100
garystine@racointeriors.com

RK Digital

8529 K Street
Omaha, NE 68127
402.597.2400
shawn@rkdigital.com

UNABLE TO ATTEND
CONFERENCE?

Presentations from AIA National President, Kate Schwennsen, FAIA and other featured presentations are available at www.aiane.org

Design Submissions and Awards
Available for purchase - \$18 each

• Featuring the 2006 AIA Nebraska Submissions and Central States Submissions

• In celebration of AIA Nebraska's 50th anniversary of incorporation, each conference registrant received a cd containing the design awards from 1964-2005.

SGH, Inc.

742 North 109th Court
Omaha, NE 68154
402.493.9393
djessick@sghinc.com

Standard Digital Imaging

4426 South 108th Street
Omaha, NE 68137
800.642.8062
aharvat@standarddigital.com

Sunderland Brothers Co.

9700 J Street
Omaha, NE 68127
402.339.2220
kallen@sunderlands.com

Tesko Custom Metal Fabrication

7350 W Montrose Avenue
Norridge, IL 60706
708.452.0045
nancyhayden@teskoenterprises.com

The Harry A. Koch Co.

11949 Q Street
Omaha, NE 68137
402.861.7036
sharon.miller@hakco.com

Twin City Concrete

3208 Keystone Drive
Omaha, NE 68134
402.571.3242
jkearns@twincityconcrete.com

United Products

3300 N Broad Street
Fremont, NE 68026
402/727-7525
larry.reimnitz@unitedproductsonline.com

Conference Partners

American Planning Association
Nebraska Masonry Institute
Joslyn Castle Institute for Sustainable Communities

Sponsors

Hyde Lecture: UNL, College of Architecture
Opening Reception: Standard Digital Imaging
Keynote Address: Kiewit
Breakfast: Nebraska Concrete and Aggregates Association
Lunch: Central Sales Lighting Systems / Tesko Custom Metal Fabrication
Excellence in Design Banquet: Weitz

Conference Planning Committee

John Sova, AIA, RDG Planning & Design
Lea Deloughery, RDG Planning & Design
Roger Doehling, AIA, The Schemmer Associates
John Duensing, AIA, Leo A Daly
Angela Harvart, Standard Digital Imaging
Mike Kros, AIA, DLR Group
Bob Krupa, AIA, RDG Planning & Design
Cory Scott, APA, RDG Planning & Design
Tom Laging, FAIA, UNL

Special Thanks

AIAS Nebraska / Jay Anderson + Brad Zuger
Society of Design Administrators / Janet Holt, RDG Planning & Design
Master of Ceremonies: Mike Kelly, Omaha World Herald

Graphics

Lea Deloughery, AIGA + Michelle Chamlee RDG Planning & Design
Donovan Beery, Eleven19 Communications

Feature Presentations

Rajeev Bajpeyi, Archi + etc. LLC
Andrea Wilkerson
Professor Keith Sawyers, Associate AIA
Exhibit "Structures of Our Time: 31 Buildings That Changed Modern Life:
Kurt Cisar, Associate AIA, Holland Basham Architects
Nicole Ludacka, Associate AIA, The Architectural Offices
RDG Planning & Design

Event Sponsors

HDR Holland Performing Arts Center Tour & Reception
RDG Planning & Design Emerging Professional Crawl

the nationwide 1920 contest to determine the look of the new capitol. Cunningham subsequently established the first school of architecture at the University of Nebraska-Lincoln. The Gold Medal is the highest honor that AIA Nebraska can bestow and is awarded in recognition of the most distinguished achievement in architecture or service to the profession of architecture in the State of Nebraska.

"George's passions in architecture and its heritage have been demonstrated through his designs and preservation actions over the past 40 years. Coupled with endless integrity for doing 'the right thing' to promote and preserve great architecture - locally and nationally - this passion has resulted in a legacy of inspiration and quality in the architecture of Nebraska. His truly exceptional career as an award-winning designer, a civic leader in urban revitalization and especially as a national leader in Historic Preservation is demonstrated in the enclosed nomination data. As his contributions and activities clearly demonstrate, George Woods Haecker AIA serves as a model and inspiration for all that Harry Cunningham stood for, and what this award exemplifies - integrity, quality, and passion in architecture" said nominator Paul Jeffrey, AIA.

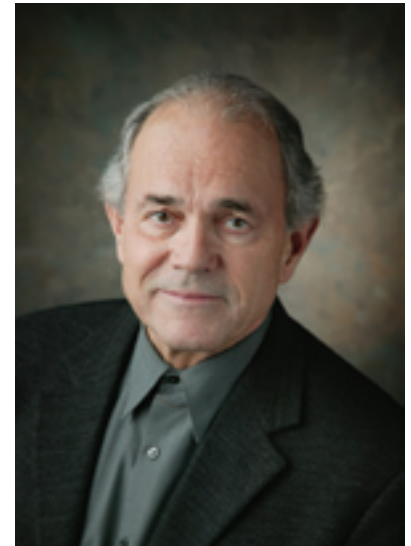
George has been practicing architecture since 1963, and is a Managing Principal with Bahr Vermeer Haecker Architects. Married to wife Judy for 46 years, they have 2 sons and a daughter, as well as 4 grandchildren.

HAECKER AWARDED CUNNINGHAM GOLD MEDAL

George W. Haecker, AIA, has been awarded the Harry F. Cunningham Gold Medal for Architectural Excellence in the State of Nebraska. A Nebraska architect whose design influence is reflected in projects throughout the United States, George Haecker's professional career reveals a comprehensive and deep respect for the historic architecture of the past coupled with a fresh, lively design attitude to enhance today's world.

"Mr. Haecker is an admired teacher and role model for many. His passion for design, combined with his longtime advocacy for the preservation of our architectural heritage has allowed him to serve as an exceptional ambassador for both Nebraska and the AIA. We are very pleased to recognize George W. Haecker for the Harry F. Cunningham Gold Medal," Edward J. Vidlak, AIA, President, AIA Nebraska.

The medal commemorates the achievements of Harry F. Cunningham who took over the Nebraska State Capitol project after the death of architect Bertram Grosvenor Goodhue. It was Goodhue's building design that won



2006 AIA CENTRAL STATES DESIGN AWARDS

AIA Nebraska sponsored the 2006 Central States Design Awards Program. Architects from a five state region (Nebraska, Iowa, Kansas, Missouri and Oklahoma) submitted projects for consideration.

The Central States Region jury, comprising of Chair, Merrill Elam, AIA, Mack Scogin Merrill Elam Architects; Carlos Tardio, Tardio Architecture; Jimmy Smith, AIA, Perkins + Will; Amy Landesberg, AIA, Amy Landesberg Architects carefully reviewed 166 entries this year. The jury presented 8 Honor Awards and 6 Merits, several of these awards were presented to Nebraska firms.

This year's categories for consideration include architecture, interiors, unbuilt, details and urban design. Projects are judged based on a variety of features, including unique design, originality, extended use attributes, sustainability, budget and use of environmental surroundings.



ARCHITECTURE / HONOR

Two Rivers Marketing Group, Des Moines, IA

Owner: Tom Dunphy / Two Rivers Marketing Group

Firm: Shiffler Associates Architects, P.L.C.

Photographer: Cameron Campbell Integrated Studio / Ames, Iowa

The building was originally constructed in 1935 as a General Motors parts warehouse. In 2005, the client purchased the building, with desires of turning the building into a permanent home for their agency. The nine-month design-build process of renovating the existing 40,000 square foot warehouse space into a "machine for working" began shortly thereafter. The crowning jewel of the renovation was the insertion of a 3,000 square foot mezzanine into the warehouse's large center clerestory. The self-supporting mezzanine appears to float in the space on small canted columns. The catwalks across the mezzanine are steel grating with a wire mesh handrail, referring to factory catwalks. The translucent nature of the fiberglass panels provide privacy for the offices, yet still creates a sense of openness. Plywood was used to create walls for conference rooms and other more private areas. The warmth of the plywood provided contrast to the colder industrial steel of the space. The factory concept allowed architects to use the original character of the building to make an interesting and fun place to work. This project is a shining example of adaptive reuse of an interesting piece of industrial history into a functional and energetic office space.



ARCHITECTURE / HONOR

Monarch Place, Omaha, NE

Owner: Quantum Quality Real Estate

Firm: Randy Brown Architects

Photographer: Farshid Assasi

The challenge was to design a commercial retail building on the edge of Omaha. The goals for the project were:

For the building to draw people's attention as they drive by

To create a public outdoor space

To incorporate plantings in artistic ways

The solution looked to the billboard as a conceptual starting point. The billboard presents the "commercial company name" to people in their cars. The billboard's structural steel pieces, skin and lighting were incorporated into the building design.

This building type is replacing the barns which once stood on the site. We created the transparency of an old barn by designing a skin built from galvanized metal studs.

We answered the question: "Can a commercial retail building be beautiful?"



ARCHITECTURE / HONOR

5550 McKinley House, Omaha, NE

Owner: Randy Brown
Firm: Randy Brown Architects
Photographer: Randy Brown Architects

A young couple with 2 children bought an old farmhouse and 10 acres of property. The couple decided to move in to the house and phase construction projects. The intention is for the project is to be a laboratory for architectural experiments. The hope is for the house to never be finished. The first phase was to clean up the surrounding landscape and create outdoor play areas which were completed a year ago. Phase 2 construction on a 3,000 SF living sleeping vessel has reached substantial completion. The design is exploring ways to intertwine the man made with natural. The intention is to create a house that is so connected with the land that it is simultaneously natural and man made. To achieve this state, the land has been sculpted into different platforms with manmade geometries. A mowed grass lawn in the shape of a folded line runs throughout the site, acting as the string to tie the project together. Natural materials such as recycled barn wood and rusted steel will be used with grass roof gardens and limestone gabion walls. The house becomes a series of spaces integrated with the land.



ARCHITECTURE / HONOR

Figge Art Museum, Davenport, IA

Owner: Dr. Steven Bradley, Director
Firm: David Chipperfield Architects
Architect of Record: Herbert Lewis Kruse Blunck Architecture
Photographer: Farshid Assasi

The creation of a new home for this Art Museum is a major catalyst in the urban revitalization of this historic city, which is located on the banks of the Mississippi River on Iowa's eastern border. In order to create an emblematic building for the city, the design of the Art Museum was conceived as a monolithic glass structure that would powerfully yet simply landmark Davenport's redeveloping waterfront. Its architecture was based around the idea of simple volumetric block enveloped by opaque, transparent, and translucent surfaces. These glass surfaces are fritted with horizontal banding that varies in density.

In urban terms, the design looks to support the old city grid by filling one half of a previously empty city block. Yet in maintaining a strong and singular outline, the design of the Museum reveals itself as more varied than its urban footprint would suggest – different frontages reflect differing site conditions and define each of the building's facades with distinct approaches: city plaza, street entrance, and riverside terrace. The plaza will provide for a sculpture garden and public gathering space, connecting the Figge visually with other cultural attractions in the downtown.



ARCHITECTURE / MERIT

420 E. Locust Renovation, Des Moines, IA

Owner: Steve Logsdon
Firm: Herbert Lewis Kruse Blunck Architecture
Photographer: Farshid Assasi

Project is the restoration of a historic commercial building in Des Moines' East Village, a newly revived cultural and shopping district located between the Iowa State Capital and the Des Moines River.



ARCHITECTURE / MERIT

The Faye S. Sarofim Research Building, The Brown Foundation Institute of Molecular Medicine for the Prevention of Human Diseases, The University of Texas Health Science Center, Houston, TX

Owner: The University of Texas

Firm: BNIM Architects

Photographer: Richard Payne, FAIA

This 229,250 SF project houses core research laboratories, administrative offices and a glass auditorium. Located in the Texas Medical Center, the parti consists of a central atrium flanked by two wings: the southern containing administrative offices and the northern containing labs. The openness of the atrium and the ground floor encourages public passage through the building giving the program a sense of transparency within the community.



ARCHITECTURE / MERIT

Goodwill, Omaha

Owner: Goodwill Industries

Firm: RDG Planning & Design

Photographer: Farshid Assasi

The challenge was to re-brand a nonprofit thrift store with a modest budget. The design explores the use of signage and transparency in a consumer society. A two story concrete and steel structure with point supported glass greets visitors upon entry. In order to keep costs to a minimum, the 17,000 square foot building is primarily exposed burnished block masonry.



ARCHITECTURE / MERIT

Des Moines Public Library, Des Moines, IA

Firm: David Chipperfield Architects / Architect of Record:

Herbert Lewis Kruse Blunck Architecture

Photographer: Farshid Assasi

The library forms an integral part of the new 'Western Gateway Park' in downtown Des Moines. This area, an intensive brown field regeneration project, is currently under construction and the new library and park will become a centerpiece for the urban renewal of Des Moines.



INTERIOR / HONOR

Coppola Enterprises Office Remodel, Des Moines, IA

Owner: Michael Coppola, Coppola Enterprises

Firm: Herbert Lewis Kruse Blunck Architecture

Photographer: Bob Shimer/Hedrich Blessing

Located in a strip mall, this property management office was once home to a laundromat. The office is organized around a large corridor that serves as a gathering space for guests and clients as they arrive for meetings. A private office for the company president was constructed adjacent to the gathering space with a simple glass partition defining the office from the gathering space. Opposite the president's office is another private office and conference room that are also separated from the gathering space with a simple glass partition. Enclosed within the service core of the project is the file/storage room as well as the mechanical systems for the project.



INTERIOR / HONOR

Iowa State Capitol – Interior Rehabilitation, Des Moines, IA

Firm: :RDG Planning & Design, Des Moines, IA

Photographer: Farshid Assassi

Much time and effort was put into researching historical design solutions and evidence of original finishes, so it was possible to restore the interior appearance to the appropriate time periods, while following the Secretary of the Interior's Standards of Rehabilitation.

A fire in 1904 damaged portions of the building that allows the restoration in these areas to be restored to the 1904 appearance. Areas that survived the fire in 1904 maintain the original scheme and become a point of explanation and interpretation by the tour guides of the building.

The interior was restored to the 1884 or 1904 appearance. The public spaces in the rest of the building had undergone a major redecoration campaign in that year, the design by noted artist Elmer Garnsey. The 24 scagliola columns had been crudely painted over since then, but initial investigation revealed that most of the original surface remained intact.



INTERIOR / MERIT

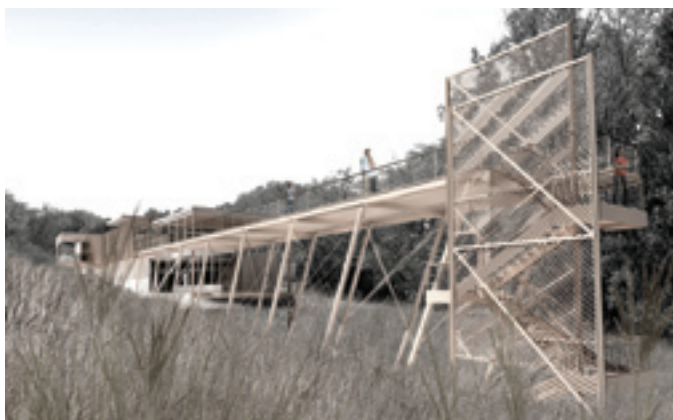
Madame Suren, Omaha, NE

Firm: Randy Brown Architects

Owner(s): Paul and Alice Gash

Photographer: Farshid Assassi

The beautifully crafted merchandise warranted a space that presents the items as pieces of art.



UNBUILT / HONOR

Allwine Prairie Research Center, UNO Department of Biology, Bennington, NE
Firm: Randy Brown Architects

The project is a research center to be constructed on a native prairie site owned by the University of Nebraska at Omaha. The prairie is a research site for the Biology department who focus on burning of native prairies.

The program calls for lab space, office space, conferencing space, a caretaker living space and a large public space to be used for community education and interaction with the prairie. We looked to the grass plants as inspiration for the building. The stem of Native grass plants grows in a telescoping manner which became our inspiration for the research building. The building interior is open and frames views to the prairie. The research labs are located in a two story space which can be viewed from the public space.

A large deck and staircase down to the prairie is the climax to the building.



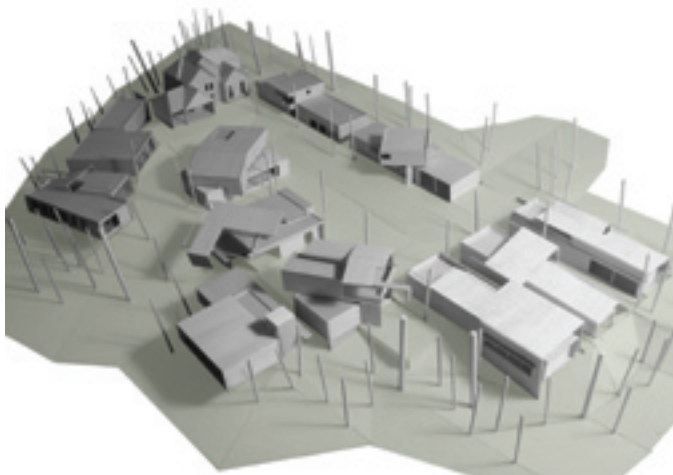
UNBUILT / HONOR

Ferrous Park: Constructing Urbanism / Ferrous Park International Housing Competition

Firms: el dorado inc, Marlon Blackwell Architect, Min-Day and FACE Design
Owner: STRETCH

The project is a response to the Ferrous Park International Housing Competition in the Crossroads Arts District of Kansas City, Missouri. The competition was organized by the owner of the project site, a successful local artist and developer. The basic program called for a seven-unit condominium structure and improvements to an existing sculpture garden.

The proposal is rooted in an overarching goal to create a cohesive addition to Kansas City's urban environment that at the same time embraces the dynamic and improvisational character of the Crossroads Arts District. The program called for the designs to embrace affordability and sustainability. In addition, much attention was to be paid to the sculpture park itself. Indeed, the solution our team developed is as much about built form (buildings, gates, sculptures) as it is about urban space (alleyways, streets, park space). The interwoven and interdependent nature of these realms is critical to the success of Ferrous Park.



URBAN DESIGN / MERIT

Hidden Creek (Urban Development), Omaha

Firm: Randy Brown Architects
Owner: Quantum Quality Real Estate
Photographer: Randy Brown Architects

The challenge is to create a new type of suburban development that responds to both the demands of single-family homebuyers and addresses the problematic nature of sprawling cookie cutter housing developments common to most Midwest cities.

Each individual house will be designed with green technologies including active and passive solar design, green roofs and grey water recycling systems. The Eco-Village responds to the sameness of the typical builder driven house design by offering 11 different custom architect designed homes. Each plan will be unique based on its location on the site. Furthermore, each house will be designed to allow views to the nature preserve or the tree-lined creek.

2006 AIA NEBRASKA DESIGN AWARDS

AIA Nebraska, a Society of the American Institute of Architects presented 2 Honor Awards, 3 Citations and 3 Honorable Mention at this year's Excellence in Architecture Banquet, September 15, at the Gallup University, Omaha, Nebraska.

The highlighted winning projects were selected from 66 entries from firms across Nebraska by the following Phoenix design jury members: Eddie Jones, AIA, Jones Studio; Jack DeBartolo 3, AIA, DeBartolo Architects; Jay Silverberg, AIA, Gould Evans.



NEW CONSTRUCTION / HONOR

5550 McKinley House, Omaha, NE

Owner: Randy Brown
Firm: Randy Brown Architects
Photographer: Randy Brown Architects

A young couple with 2 children bought an old farmhouse and 10 acres of property. The couple decided to move in to the house and phase construction projects. The intention is for the project is to be a laboratory for architectural experiments. The hope is for the house to never be finished. The first phase was to clean up the surrounding landscape and create outdoor play areas which were completed a year ago. Phase 2 construction on a 3,000 SF living sleeping vessel has reached substantial completion. The design is exploring ways to intertwine the man made with natural. The intention is to create a house that is so connected with the land that it is simultaneously natural and man made. To achieve this state, the land has been sculpted into different platforms with manmade geometries. A mowed grass lawn in the shape of a folded line runs throughout the site, acting as the string to tie the project together. Natural materials such as recycled barn wood and rusted steel will be used with grass roof gardens and limestone gabion walls. The house becomes a series of spaces integrated with the land.

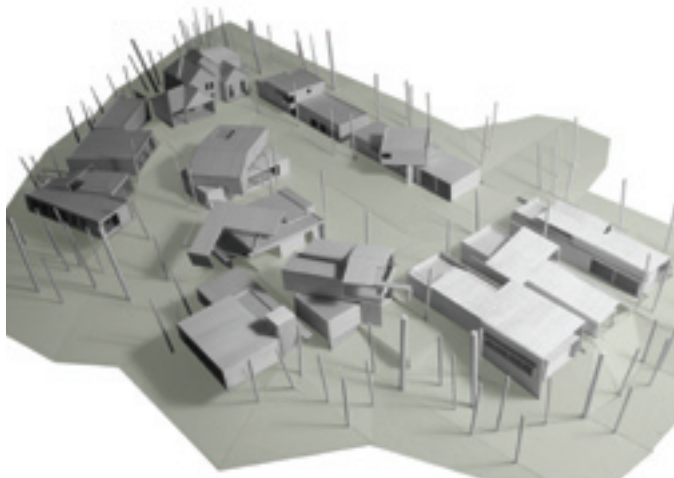


NEW CONSTRUCTION / CITATION + DETAILS / HONORABLE MENTION

Performing Arts Center, Omaha, NE

Owner: Omaha Performing Arts
Firm: HDR Architecture, Inc. in collaboration with Polshek Partnership Architects
Photographer: Tom Kessler

The Omaha Performing Arts Center is the next significant cultural centerpiece for the City of Omaha's ever-growing civic institutions, bringing an important focus and presence to the musical arts community across the Midwest. As an urban ensemble, the Center reinforces existing patterns and connections with the community of Omaha while creating new possibilities for the development of the musical arts, within a series of memorable spaces for both teaching and performance. These include a 2000-seat major concert hall, a 450-seat flexible chamber music hall and an outdoor performance venue within the center courtyard.



NEW CONSTRUCTION / CITATION

Hidden Creek (Urban Development), Omaha

Firm: Randy Brown Architects

Owner: Quantum Quality Real Estate

Photographer: Randy Brown Architects

The challenge is to create a new type of suburban development that responds to both the demands of single-family homebuyers and addresses the problematic nature of sprawling cookie cutter housing developments common to most Midwest cities.

Each individual house will be designed with green technologies including active and passive solar design, green roofs and grey water recycling systems. The Eco-Village responds to the sameness of the typical builder driven house design by offering 11 different custom architect designed homes. Each plan will be unique based on its location on the site. Furthermore, each house will be designed to allow views to the nature preserve or the tree-lined creek.



NEW CONSTRUCTION / HONOR

Monarch Place, Omaha, NE

Owner: Quantum Quality Real Estate

Firm: Randy Brown Architects

Photographer: Farshid Assasi

The challenge was to design a commercial retail building on the edge of Omaha. The goals for the project were:

For the building to draw people's attention as they drive by

To create a public outdoor space

To incorporate plantings in artistic ways

The solution looked to the billboard as a conceptual starting point. The billboard presents the "commercial company name" to people in their cars. The billboard's structural steel pieces, skin and lighting were incorporated into the building design.

This building type is replacing the barns which once stood on the site. We created the transparency of an old barn by designing a skin built from galvanized metal studs.

We answered the question: "Can a commercial retail building be beautiful?"



NEW CONSTRUCTION / HONORABLE MENTION

Salon Gallerie, Omaha, NE

Firm: Randy Brown Architects

Photographer: Farshid Assasi

The challenge was to create private work places to be rented out to entrepreneurs in the fields of hair styling, skincare, manicure/pedicure, and massage therapy.

Design objectives:

Design creative space

Make the public hallways an ever changing experience

Create a multifunctional custom millwork styling station for each work space

Create sitting spaces integrated into the public hallways

Create a variety of work places

The design creates unusual room shapes with large amounts of glass to expand space, making the rooms feel larger and open.



The Nebraska Architect is the official newsletter of AIA Nebraska. Opinions expressed herein are not necessarily those of AIA Nebraska or the American Institute of Architects. Advertisements or products and services appearing in The Nebraska Architect do not constitute an endorsement.

AIA Nebraska
102 Architecture Hall
University of Nebraska
PO Box 80045
Lincoln, NE 68508
Phone 402/472-1456
Fax 402/472-1654
www.aiane.org
skay2@unl.edu or
kclymer2@unl.edu

EDITOR

Sara A. Kay

GRAPHIC DESIGNER

Donovan Beery

2006

AIA NEBRASKA BOARD OF DIRECTORS

PRESIDENT

Edward Vidlak, AIA
Leo A. Daly

PRESIDENT – ELECT

Bruce D. Carpenter, AIA
HDR

SECRETARY

Larry D. Smith, AIA
Avant Architects, Inc.

TREASURER

Wynn Mehlhaff, AIA
Davis Design

DIRECTOR

W. Larry Jacobsen, AIA
The Schemmer Associates Inc.

DIRECTOR

Tamara Eagle Bull, AIA
Encompass Architects

ASSOCIATE DIRECTOR

Nicole Ludacka, Associate AIA
The Architectural Offices

LINCOLN CHAPTER PRESIDENT

Kristi Nohavec, AIA
The Clark Enersen Partners, Inc.

OMAHA CHAPTER PRESIDENT

Roger Doehling, AIA
The Schemmer Associates, Inc.

WESTERN NE CHAPTER PRESIDENT

Jeffrey Hinrichs, AIA
Wilkins, Hinrichs, & Stober Architects, LLC

AIAS

Brad Zuger, AIAS President
College of Architecture / UNL

PAST PRESIDENT

Patricia Birch, AIA
Schoenleber, Shriner, & Hittle

EX OFFICIO MEMBER

R. Wayne Drummond, FAIA/
College of Architecture / UNL

EX OFFICIO MEMBER

Mark Hoistad, AIA
College of Architecture / UNL

EXECUTIVE DIRECTOR

Sara A. Kay

EXECUTIVE ASSISTANT

Kelsey J. Clymer



UNBUILT / HONOR

**Allwine Prairie Research Center, UNO
Department of Biology, Bennington, NE**
Firm: Randy Brown Architects

The project is a research center to be constructed on a native prairie site owned by the University of Nebraska at Omaha. The prairie is a research site for the Biology department who focus on burning of native prairies.

The program calls for lab space, office space, conferencing space, a caretaker living space and a large public space to be used for community education and interaction with the prairie. We looked to the grass plants as inspiration for the building. The stem of Native grass plants grows in a telescoping manner which became our inspiration for the research building. The building interior is open and frames views to the prairie. The research labs are located in a two story space which can be viewed from the public space.

A large deck and staircase down to the prairie is the climax to the building.



UNBUILT / CITATION

**The Salvation Army Omaha Kroc Center,
Omaha, NE**
Firm: HDR Architecture, Inc.

The Salvation Army Omaha RJKCCC will be a community node, a gathering place where lives are transformed, the programs and mission of The Salvation Army are met, and the dreams of Joan Kroc are fulfilled. The architecture will inspire, support and serve the programs, provide an environment for individuals to discover their gifts, for potentials to be realized, and relationships to be built.



**MASONRY / HONORABLE
MENTION**

Ralston High School, Ralston, NE
Owner: Ralston Public Schools Firm: DLR Group
Photographer: Tom Kessler

Faced with inadequate wiring for computers, leaky roofs, poor acoustics and various other problems, this school was in need of extensive renovation. The result provided the school with a new auditorium to be shared with the community, as well as a media center, commons area, administrative offices and an expanded kitchen and renovated pool.

Jury Comment: The masonry coursing on the wing walls rejects the conventional level and is used to reinforce the form. Also the masonry entry walk attempts to merge the ground and wall planes together.